

2025/2026



# CELEBRATE LOVE, THE KOMYUNITI WAY

*KOMYUNITI*



# ABOUT US

Komyuniti is a multi-functional bar and restaurant that serves as the beating heart of YOTEL Singapore; a vibrant social hub designed for work, play, eating, and drinking.

Our philosophy is Minimalist, Unique, & Innovative, proven by our global recognition:

- Event Space of the Year 2025 by Venuerific
- Tripadvisor Travellers' Choice Awards Winner (Top 10% of global restaurants)

Located on Level 10, Komyuniti offers a relaxed, casual atmosphere unlike traditional hotel banquet services, making it the perfect unique venue for any occasion.

We are also a GSTC-certified venue, upholding global sustainability standards.







# WHY KOMYUNITI?

**For the couples who dare to be different.**

- Not your usual ballroom wedding
- Ideal for couples who want intimacy, personality, and amazing cocktails
- Centrally located in Orchard, perfect for local and destination weddings
- Flexible space, indoor-outdoor vibes, stylishly casual
- Bar-led experience with amazing cocktails and gourmet bites
- Backed by the energetic buzz of YOTEL Singapore

# **FROM ‘YES’ TO ‘I DO’ AND EVERYTHING AFTER**

At Komyuniti, we know that no two love stories are the same, which is why your wedding celebration should feel completely you. Whether you're planning a cosy ROM ceremony, a stylish dinner party, or a lively cocktail reception under the stars, our space adapts to suit your style.



# CELEBRATE IT YOUR WAY

- **ROM & Solemnisation Ceremonies**

Say "I do" in an intimate, beautifully styled setting

- **Wedding Lunches & Dinners**

Elegant, relaxed dining with flavour-packed sharing plates

- **Cocktail Receptions**

Mingle, toast, and celebrate with crafted drinks and canapés

- **After-Parties**

Let your hair down with our resident band, DJ, or use your own playlist

- **Pre-Wedding Shoots**

Capture candid moments in our stylish, design-led space

- **Post-Wedding Brunches**

Reconnect over coffee, comfort food, and good vibes

- **Hen & Stag Parties**

Celebrate the final fling with custom-made bites and bold cocktails



# OUR SPACES AT A GLANCE

Whether you're planning an intimate ceremony or a full venue takeover, Komyuniti offers versatile spaces that adapt to your wedding vision. Each area is designed with flow, comfort, and atmosphere in mind – perfect for dining, dancing, and everything in between.



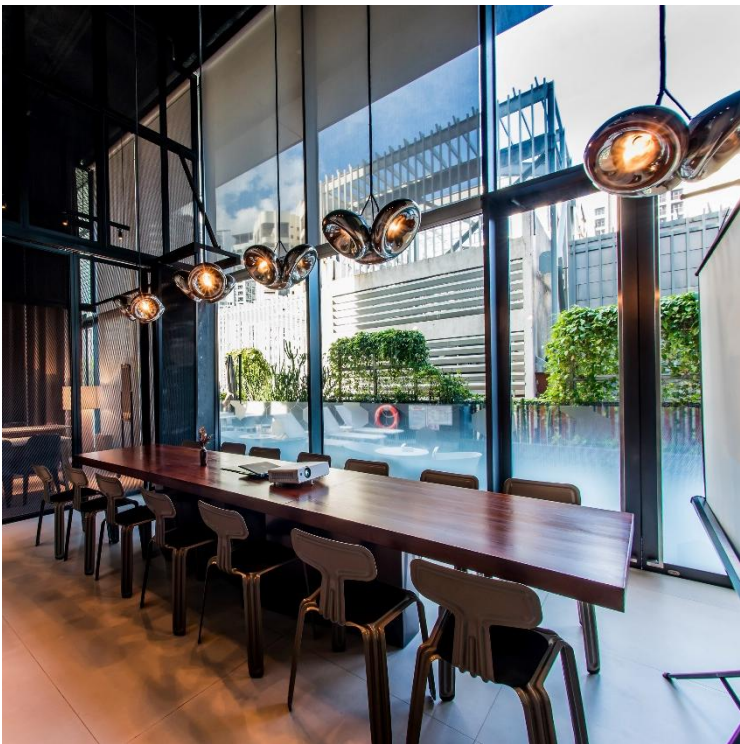
# OUR SPACES

## Stylish, flexible, and full of character

At Komyuniti, we offer versatile event spaces with transparent pricing to help you plan seamlessly. Whether you're hosting an intimate gathering or a large-scale event, we have the perfect space to suit your needs.

If you have specific requirements or need adjustments to any of our packages, we're happy to work with you to ensure your event is tailored to your vision.

Our team is happy to assist every step of the way, providing personalised support to bring your ideas to life.



Komyuniti Studio



Seated: 20 pax



Standing: 50 pax



Off-peak: \$800++  
Peak: \$1,000++



Main Dining Area



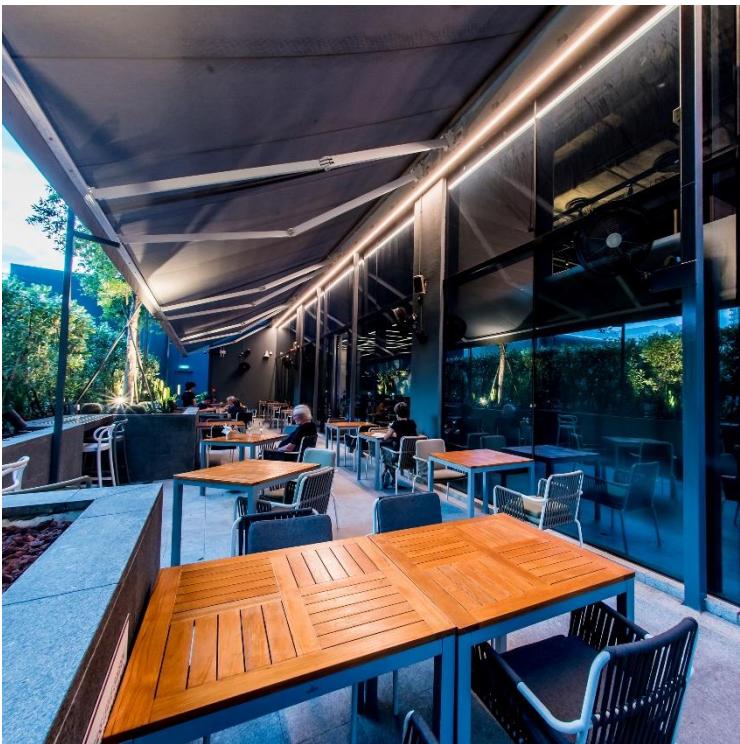
Seated: 100 pax



Standing: 180 pax



Off-peak: \$3,000++  
Peak: \$10,000++



Garden Terrace



Seated: 30 pax



Standing: 80 pax



Off-peak: \$1,000++  
Peak: \$1,500++

### Off-Peak

- Mon, Tue, Thu, Sat, Sun | 12pm – 10pm
- Wed, Fri | 12pm – 4pm

### Peak

- Wed | 5pm – 10pm
- Fri | 5pm – 12am
- Public Holidays and Eve of Public Holidays

*\*Guests are only allowed to book either Indoor or outdoor and are not allowed to book both*

*\*Smoking area and public toilets will still be accessible to the public*

*\*Prices are in Singapore dollars and subject to service charge and prevailing government taxes*

### Live Band Entertainment

Live band performances are available as an optional add-on to enhance your event experience.\*

We also host regular live music every **Wednesday and Friday evenings** in the **Main Dining Area**. If your event coincides with these days and you prefer a music-free setting, let us know.\*

*\*Live band requests and changes are subject to availability and require a minimum of 1 month's notice.*





# OUR SPACES

## Komyuniti Studio

Looking for something more intimate?

Our Komyuniti Studio offers a unique, semi-private setting that brings a bold, industrial-chic vibe to your event.

Ideal for thought-provoking talks, product launches, and intimate gatherings, this space lets you host in style without losing the energy of the main restaurant's buzz.

*Seated Capacity: 30 pax*

*Standing Capacity: 50 pax*



# KOMYUNITI STUDIO FLOOR PLAN

LEGEND

Non-movable Table

Table

Single Chair

Sofa

Retractable Cage Panel

Concrete Pillar

Coffee Table

The floor plan for Komyuniti Studio is a rectangular room with a light gray floor. The layout includes:

- Entrance:** Located on the right side, marked with a dashed line and an arrow pointing inward, labeled "ENTRANCE TO MAIN DINING AREA".
- Fire Exit:** Located at the bottom center, marked with a door icon and the text "FIRE EXIT".
- Furniture:**
  - Tables:** There are four brown rectangular tables. One is a long table (10x2 units) in the center-left, surrounded by 10 chairs. The other three are smaller tables (4x2 units) arranged in a 2x2 grid in the center-right, each with 4 chairs.
  - Seating:** There are two purple sofas. One is a long sofa (10x2 units) in the bottom-left corner. The other is a smaller sofa (4x2 units) in the bottom-left corner, adjacent to the long one.
  - Coffee Table:** A large brown circular coffee table (4x4 units) is located in the bottom-left corner, between the two sofas.
  - Concrete Pillar:** A square concrete pillar (2x2 units) is located in the top-left corner.
  - Retractable Cage Panels:** There are two white rectangular panels (2x10 units) located on the left and right walls, near the center.
  - Non-movable Table:** A large black rectangular table (10x2 units) is located in the center-right, between the two sofas.



# OUR SPACES

## Main Dining Area

Step into the heart of Komyuniti, our spacious and vibrant dining area. This dynamic area combines modern aesthetics with a warm, communal atmosphere - the ultimate venue for large-scale gatherings.

Whether you're hosting a corporate networking event, an unforgettable wedding reception, or a celebratory party, this versatile space offers the perfect setting.

*Seated Capacity: 100 pax*

*Standing Capacity: 180 pax*

### Entire Indoor Space

(Komyuniti Studio + Main Dining Area)

*Seated: Capacity: 120 pax*

*Standing Capacity: 230 pax*





# MAIN DINING AREA FLOOR PLAN

LEGEND

Non-movable Table

Table

Single Chair

Non-movable Sofa

Non-movable Cabinet

Concrete Pillar

Hostess Stand

The floor plan for the Main Dining Area is a rectangular space with various seating and service areas. The layout includes:

- Top Wall:** A long row of four rectangular tables, each with two chairs. To the right of these tables is a purple non-movable cabinet, a concrete pillar, and a "COFFEE STATION". Further right are three more rectangular tables with two chairs each, followed by a "JUICE STATION", another concrete pillar, and a long black non-movable table with three chairs. An "EXIT TO POOL DECK" is located at the top right corner.
- Left Wall:** A vertical arrow points "ENTRANCE TO KOMYUNITI STUDIO". Further down, another vertical arrow points "TO TOILET".
- Bottom Left:** A "SERVICE PANTRY" is located near the bottom left corner. Adjacent to it is a long purple non-movable sofa.
- Center:** A large U-shaped "BAR" is surrounded by a "TEA STATION" (black non-movable table). There are several clusters of chairs around the bar and other tables. A concrete pillar is located near the center-right.
- Bottom Right:** A "Hostess Stand" is located near the bottom right corner. An "ENTRANCE" is marked with a double-headed arrow. A purple non-movable cabinet is located near the bottom right corner. Two "EXIT TO GARDEN TERRACE" signs are located at the bottom center and bottom right.





# OUR SPACES

## Garden Terrace

Bask in the open air with our versatile Garden Terrace, a lively yet laid-back alfresco space perfect for daytime and evening events.

Whether you're hosting a power lunch, a brainstorming session with your team or a relaxed networking brunch, the terrace brings an energising, fresh-air experience to your gathering.


*Seated Capacity: 30 pax*


*Standing Capacity: 80pax*

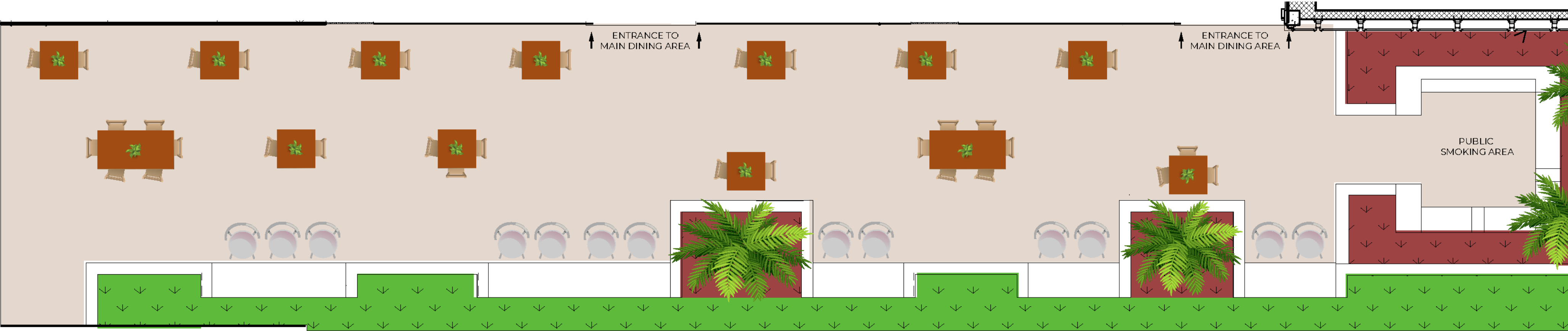


# GARDEN TERRACE FLOOR PLAN

LEGEND

Table

Single Chair





# A FEAST TO REMEMBER

Good food and drinks set the tone for a great celebration, and ours are designed to impress. From elegant canapés to hearty sharing plates, and to cocktails as bold as your love story, we'll make sure your guests are well-fed and well-toasted.



# F&B OFFERINGS

The packages shown here reflect our standard offerings and serve as a great starting point for any event. Our menu includes a variety of canapés, hearty buffet-style spreads, and beverage options like beer barrels and wine buckets to keep your guests satisfied.

Looking for something more elevated? We also offer upgraded menu tiers with indulgent dishes and premium beverages. Just let us know and we’ll be happy to share more.

If you have specific preferences, dietary requirements, or a unique vision for your event, our team would love to collaborate and customise a menu and drinks package tailored to your needs.

FOOD OPTION	INCLUSION	REMARKS
<b>Canapés</b> <i>Choice of Taste, Tempt or Tantalise</i>	<ul style="list-style-type: none"><li>• <b>Taste:</b> 6-Item Canapé Set (2 hors d'oeuvres, 2 tapas, 2 desserts)</li><li>• <b>Tempt:</b> 9-Item Canapé Set (3 hors d'oeuvres, 3 tapas, 3 desserts)</li><li>• <b>Tantalise:</b> 11-Item Canapé Set (4 hors d'oeuvres, 4 tapas, 3 desserts)</li></ul>	Min. 30 pax, max. 180 pax  Pre-order required at least 5 working days prior to event
<b>Buffet-style</b> <i>Choice of KOMpact, KOMfort, KOMpelling or KOMplete</i>	<b>KOMpact</b> includes appetisers, salad, soup, mains, sides, desserts, and free-flow coffee, tea & juices  Additional inclusions by menu tier: <ul style="list-style-type: none"><li>• <b>KOMfort:</b> + DIY Live Station</li><li>• <b>KOMpelling:</b> + DIY Live Station and Live Carving Station</li><li>• <b>KOMplete:</b> + Extra appetiser, DIY Live Station and Live Carving Station</li></ul>	Min. 25 pax, max 180 pax  Pre-order required at least 7 working days prior to event
<b>3-course Set Menu</b> <i>Choice of Lite, Lunch or Dinner</i>	<ul style="list-style-type: none"><li>• Appetiser or soup</li><li>• Mains</li><li>• Dessert</li><li>• Beverage</li></ul>	Lite: Min 10 pax, max 80 pax Lunch and Dinner: Min 15 pax, max 80 pax  Requires 7 working days prior to event
BEVERAGE OPTION	INCLUSION	REMARKS
<b>Beer Barrel</b>	38 pints per barrel of Signature Beer	Additional 10% off with a purchase of 3 or more barrels
<b>Wine Bucket</b>	5 bottles of Mixed House Wine	Additional 10% off with a purchase of 3 or more buckets
<b>Free-flow Hops &amp; Grapes (2 hours)</b>	<ul style="list-style-type: none"><li>• House Pour Wine (Shiraz, Sauvignon Blanc)</li><li>• House Pour Spirits (Gin, Vodka, Rum, Tequila, Bourbon, Whiskey)</li><li>• House Pour Beer (Signature Pale Ale by Tap)</li><li>• Soft Drinks (Coke, Coke Zero, Sprite, Ginger Ale, Tonic)</li></ul>	Min. 20 pax
<b>Free-flow Non-Alcohol (2 hours)</b>	<ul style="list-style-type: none"><li>• Soft Drinks (Coke, Coke Zero, Sprite, Ginger Ale, Tonic)</li><li>• Coffee &amp; Tea</li><li>• Juice</li></ul>	Min. 20 pax



# BEHIND THE BAR & KITCHEN

Helmed by our celebrated Head Mixologist and Head Chef, Komyuniti Bar & Restaurant brings heart, craft, and creativity to your wedding celebration. Our menus blend bold Eastern and Western flavours – from juicy sliders and elegant canapés to globally inspired bites – all thoughtfully designed to pair with our playful, Japanese-inspired cocktails. Minimalist in style, rich in flavour, and made to toast your love story.



## F&B Manager, Head Mixologist

As'ad Isnin, also known as Utt, is our multi award-winning mixologist and F&B Manager who leads Komyuniti's beverage programme with bold experimentation, fun, and creativity.

From signature cocktails to custom-made bar experiences, As'ad ensures every sip is unforgettable.



## Executive Chef

At the helm of our kitchen is Executive Chef Benny, whose convivial, flavour-driven philosophy is perfect for a celebration.

Expect a spread of playful, globally inspired sharing plates – ideal for a *kommunal*-style feast with your favourite people.



# ALL THE ESSENTIALS AND EVERYTHING EXTRA

We provide everything you need to host a stylish and seamless wedding at Komyuniti from a vibrant space and flavour-forward food to a bar experience your guests won't forget.

And when it comes to the extra details that make your celebration truly yours, we're happy to help bring them to life.

As a bar and restaurant, our standard setup includes tables, chairs, and existing cutlery and crockery. For decor, styling, and other special touches, we work closely with a trusted group of wedding partners. Just let us know what you're looking for, and we'll gladly share some exclusive rates. Prefer to bring your own stylist, band or decorator? No problem – we welcome external vendors for all non-food-related services.

Here's what we can support:

- Florals, table styling, signage, backdrops, arches (via our partners or your own)
- Music & Entertainment: Our resident live band, or bring in your own DJ/live musicians
- Plug-and-play your own curated playlists and video montages
- Add-ons like wedding favours or photographers
- Hotel room packages in YOTEL Singapore for you and your guests

Important to Note: External food and beverage vendors are not permitted unless discussed and approved on a case-by-case basis



# A GLIMPSE INTO LOVE, KOMYUNITI-STYLE





# TESTIMONIALS

*Thanks for being with us for our special occasion and making it as smooth of a journey as possible! The restaurant was beautiful, and the food was amazing as well. All our guests sang praises for the food, which was well topped up throughout the event. The staff were friendly and took initiative as well, especially this young Chinese chap in glasses who helped us with the tea ceremony.*

**Ashley & Iris**

*I just wanted to send a quick note of appreciation following my recent wedding at YOTEL. Everything turned out beautifully, and I truly have your team to thank for it. The restaurant team was efficient and thoughtful throughout, and their support really helped make the event run smoothly. Our guests had many compliments on the lunch buffet, and everyone thoroughly enjoyed the spread. Thank you once again for everything. I'm so glad we chose YOTEL for our celebration.*

**Belle & Cleon**

*The staff at Komyuniti are super nice, friendly, and incredibly helpful! I love it here! It was not a mistake that I held my solemnisation here. From the Manager to the servers, the Event Coordinator and tech support – everyone ensured it went smooth and proper. I love YOTEL and Komyuniti, and I will surely come back every year for our anniversary! Thank you to everyone!*

**Mike & Grace**



# FACTSHEET

## AV Equipment

- TV
- Projector & Screen
- Speaker with Bluetooth
- Handheld Mics

## Others

- Flip Chart Board with Papers

## Car Park and Charges

- The car park is managed by International Building and operates on a first-come, first-served basis. Complimentary parking is not available, and fees are not included in your booking
- Option to purchase parking coupons are available upon request
- Full standard rates can be found [here](#)
- Additional Info:
  - No motorcycle parking – nearest is at Anguilla Park (5-min walk)
  - Car park height limit: 2.2m





# YOUR WEDDING PLANNING CHECKLIST

Planning a wedding can feel overwhelming, but it doesn't have to be. Use this handy checklist to guide your journey and let us know how we can help tick off the boxes.

Your Wedding Checklist:

1. Confirm ROM or solemnisation date & time
2. Finalise guest list & choose your celebration type
3. Book your venue & secure deposit
4. Decide on menu: buffet-style, canapés, cocktail, or plated
5. Choose your drinks package
6. Confirm entertainment (band, playlist, speeches)
7. Arrange styling & décor (DIY or with our partners)
8. Schedule food tasting session (if needed)
9. Plan for wedding cake, wedding favours or other add-ons
10. Confirm AV needs (mic, music, slideshows)
11. Allocate space for pre-wedding shoot or after-party
12. Final RSVP & seating plan
13. Enjoy the big day!

Tip: Our team is happy to guide you through each step, and we can recommend partners for anything you need help with.



# READY TO PLAN?

Schedule a venue tour and create a wedding that's authentically yours

**KOMYUNITI**

singapore.events@yotel.com  
366 Orchard Road, Level 10, YOTEL, Singapore 238904

**Maureen Infante**

maureen.infante@yotel.com  
T: 6866 8052  
M: 8118 0749

**Kimberly Chick**

kimberly.chick@yotel.com  
T: 6866 8053  
M: 9011 3057